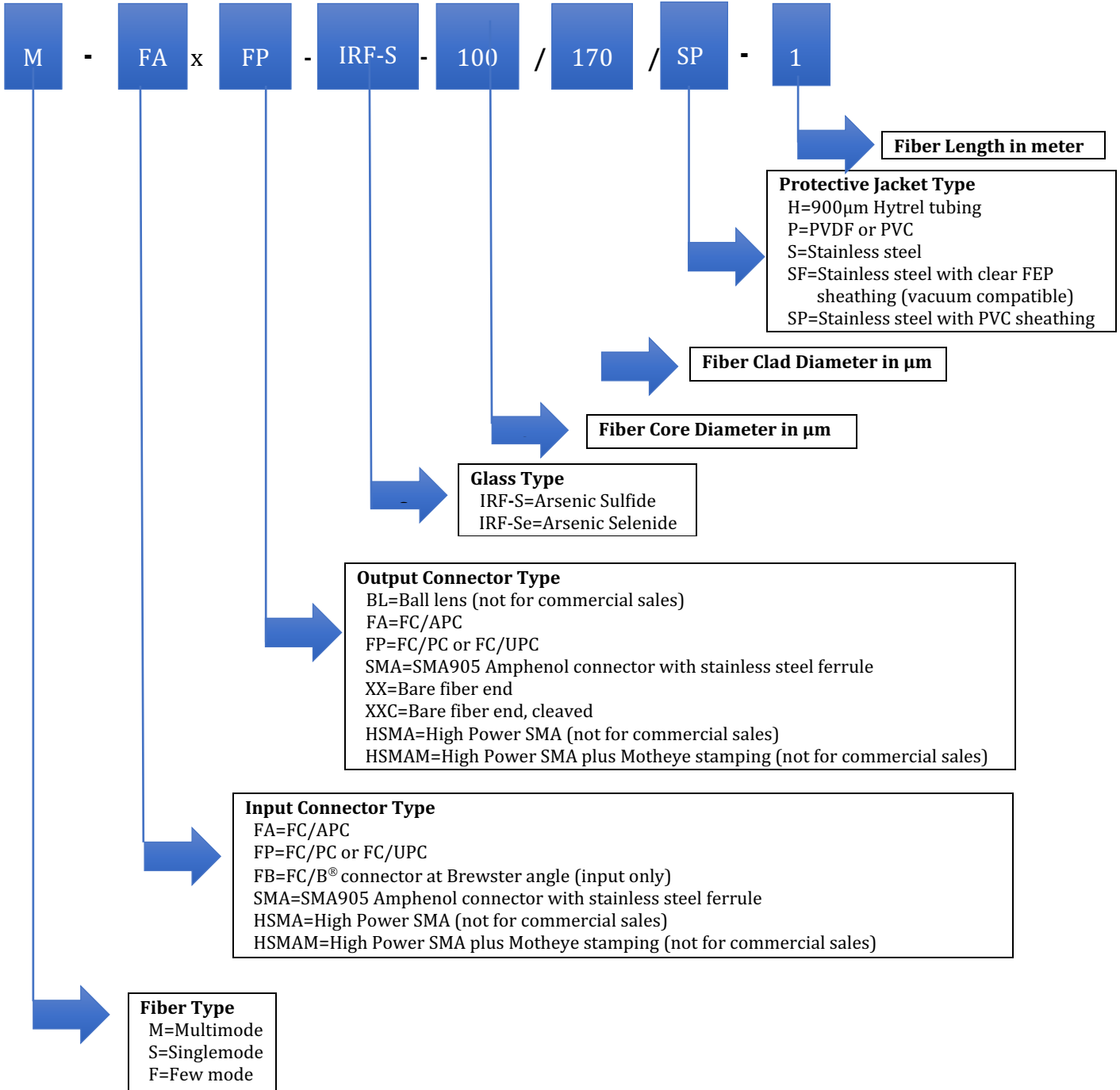




The Mid-IR Fiber Devices Company

## IRflex Standard Fiber Cable Ordering Chart (updated 2023/10/19)





*The Mid-IR Fiber Devices Company*

**IRflex Part # Description Examples:**

**M-FAxFP-IRF-S-100/170/SP-1**

IRF-S-100 chalcogenide  $As_2S_3$  glass based Mid-IR fiber cable: Multimode, FC/APC to FC/UPC connector with stainless steel ferrule, stainless steel jacket with PVC sheathing, 1 meter long.

**S-SMAxSMA-IRF-Se-12/170/SP-1**

IRF-Se-12 chalcogenide  $As_2Se_3$  glass based Mid-IR fiber cable: Singlemode, Amphenol SMA905 to Amphenol SMA905 connector with stainless steel ferrules, stainless steel jacket with PVC sheathing, 1 meter long

**M-FBxFP-IRF-S-200/P-1**

IRF-S-200 chalcogenide  $As_2S_3$  glass based Mid-IR fiber cable: Multimode, FC/B<sup>®</sup> connector at Brewster angle plus a holder to FC/UPC connector, PVDF jacket, 1 meter long

**M-FAxXXC-IRF-S-100/170/SP-1**

IRF-S-100 chalcogenide  $As_2S_3$  glass based Mid-IR fiber cable: Multimode, FC/APC connector with stainless steel ferrule to bare fiber end, CLEAVED, stainless steel jacket with PVC sheathing, 1 meter long